

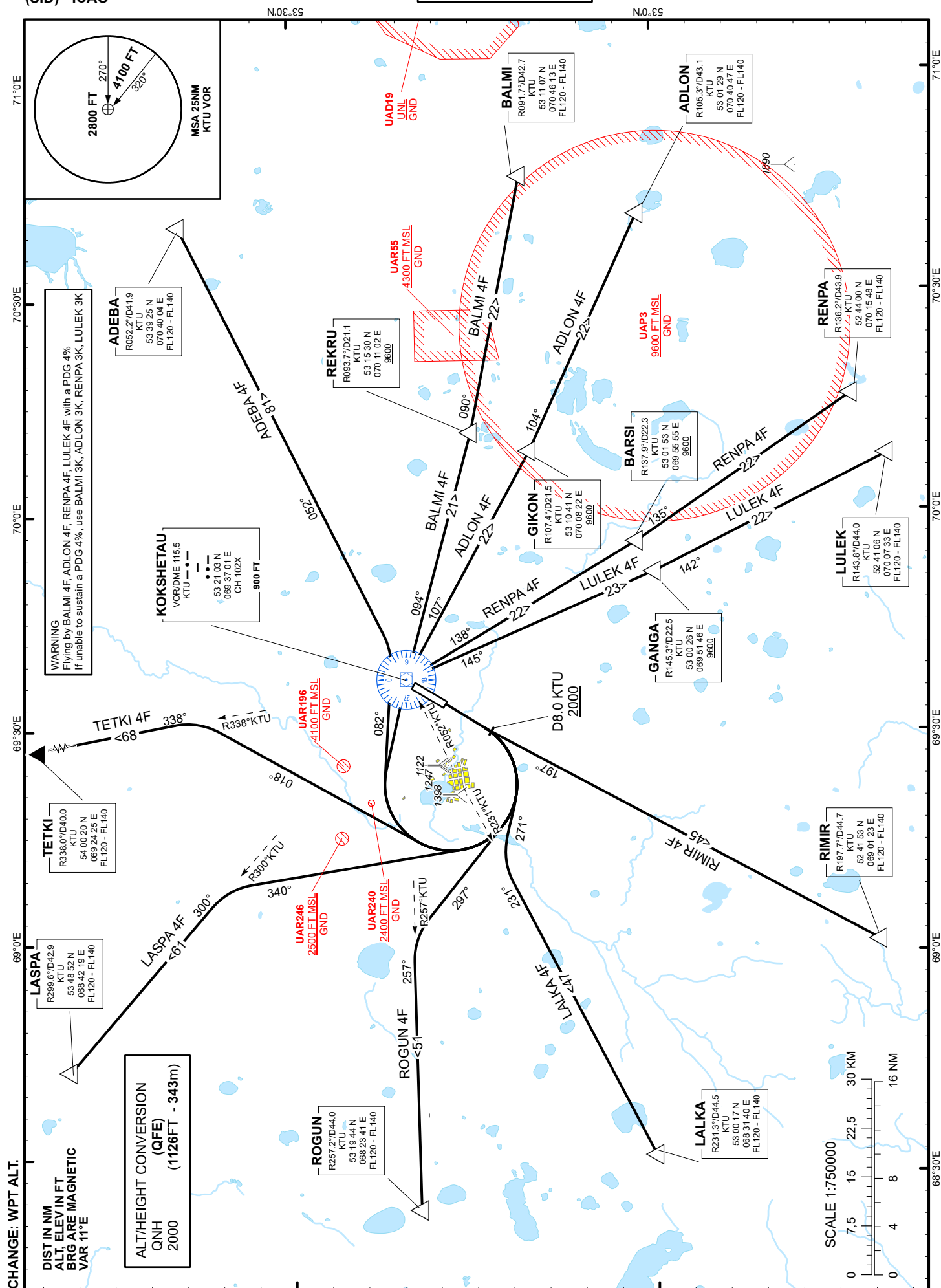
STANDARD DEPARTURE  
CHART - INSTRUMENT  
(SID) - ICAO

TRANSITION ALTITUDE  
10000 FT

KOKSHETAU TOWER 127.9  
KOKSHETAU ATIS (EN) 134.9  
KOKSHETAU ATIS (RU) 126.0

ADEBA 4F, ADLON 4F, BALMI 4F,  
LASPA 4F, LULEK 4F, RENPA 4F,  
RIMIR 4F, LALKA 4F, ROGUN 4F,  
TETKI 4F.

KOKSHETAU  
RWY 20



**STANDARD INSTRUMENT DEPARTURE ROUTES (SID) KOKSHETAU RWY 20**

**ADEBA 4F**

After take-off climb straight ahead to 2000 or above. At D8.0 KTU, turn RIGHT on track 082° until intercept R052° KTU, then proceed on track 052° to ADEBA (R052.2° D41.9 KTU).  
Cross ADEBA at FL120-FL140.

**BALMI 4F**

After take-off climb straight ahead to 2000 or above. At D8.0 KTU, turn RIGHT to KTU, after crossing KTU proceed on track 094° to REKRU (R093.7° D21.1 KTU). After crossing REKRU turn LEFT on track 090° to BALMI (R091.7° D42.7 KTU).  
Cross REKRU at 9600FT or above.  
Cross BALMI at FL120-FL140.

**ADLON 4F**

After take-off climb straight ahead to 2000 or above. At D8.0 KTU, turn RIGHT to KTU, after crossing KTU proceed on track 107° to GIKON (R107.4° D21.5 KTU). After crossing GIKON turn LEFT on track 104° to ADLON (R105.3° D43.1 KTU).  
Cross GIKON at 9600FT or above.  
Cross ADLON at FL120-FL140.

**RENPA 4F**

After take-off climb straight ahead to 2000 or above. At D8.0 KTU, turn RIGHT to KTU, after crossing KTU proceed on track 138° to BARSİ (R137.9° D22.3 KTU). After crossing BARSİ turn LEFT on track 135° to RENPA (R136.2° D43.9 KTU).  
Cross BARSİ at 9600FT or above.  
Cross RENPA at FL120-FL140.

**LULEK 4F**

After take-off climb straight ahead to 2000 or above. At D8.0 KTU, turn RIGHT to KTU, after crossing KTU proceed on track 145° to GANGA (R145.3° D22.5 KTU). After crossing GANGA turn LEFT on track 142° to LULEK (R143.8° D44.0 KTU).  
Cross GANGA at 9600FT or above.  
Cross LULEK at FL120-FL140.

**RIMIR 4F**

After take-off climb straight ahead to 2000 or above. At D8.0 KTU, turn LEFT on track 197° to RIMIR (R197.7° D44.7 KTU).  
Cross RIMIR at FL120-FL140.

**LALKA 4F**

After take-off climb straight ahead to 2000 or above. At D8.0 KTU, turn RIGHT on track 271° until intercept R231° KTU, then proceed on track 231° to LALKA (R231.3° D44.5 KTU).  
Cross LALKA at FL120-FL140.

**ROGUN 4F**

After take-off climb straight ahead to 2000 or above. At D8.0 KTU, turn RIGHT on track 297° until intercept R257° KTU, then proceed on track 257° to ROGUN (R257.2° D44.0 KTU).  
Cross ROGUN at FL120-FL140.

**LASPA 4F**

After take-off climb straight ahead to 2000 or above. At D8.0 KTU, turn RIGHT on track 340° until intercept R300° KTU, then proceed on track 300° to LASPA (R299.6° D42.9 KTU).  
Cross LASPA at FL120-FL140.

**TETKI 4F**

After take-off climb straight ahead to 2000 or above. At D8.0 KTU, turn RIGHT on track 018° until intercept R338° KTU, then proceed on track 338° to TETKI (R338.0° D40.0 KTU).  
Cross TETKI at FL120-FL140.